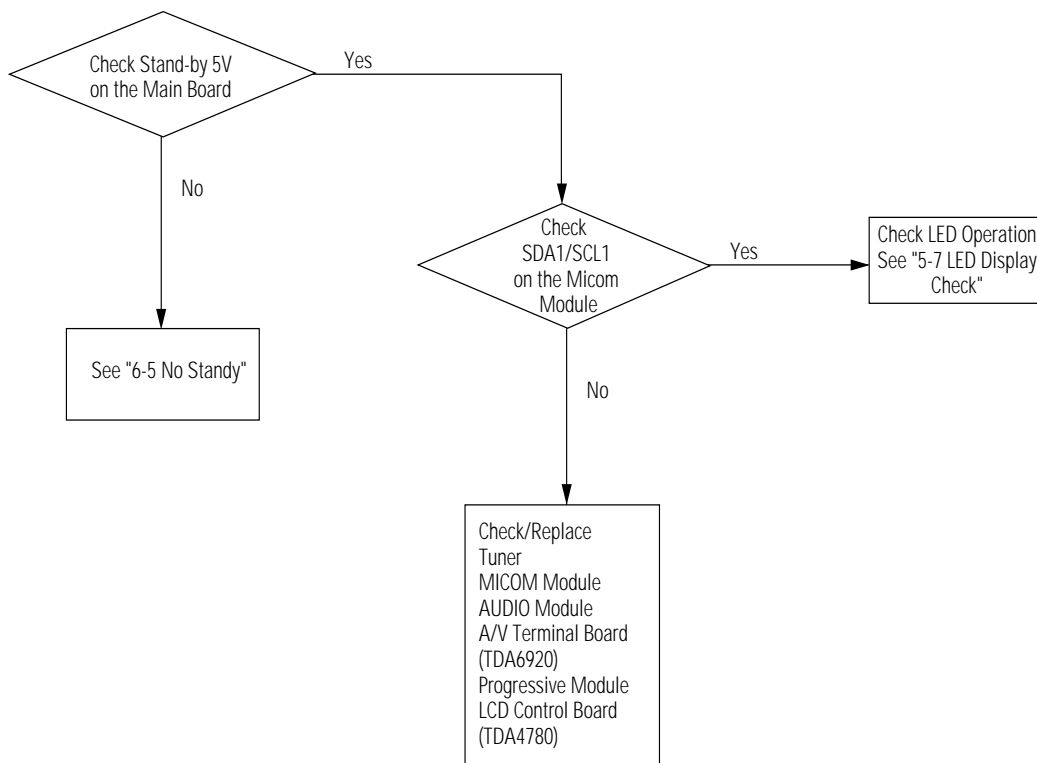

6. Troubleshooting

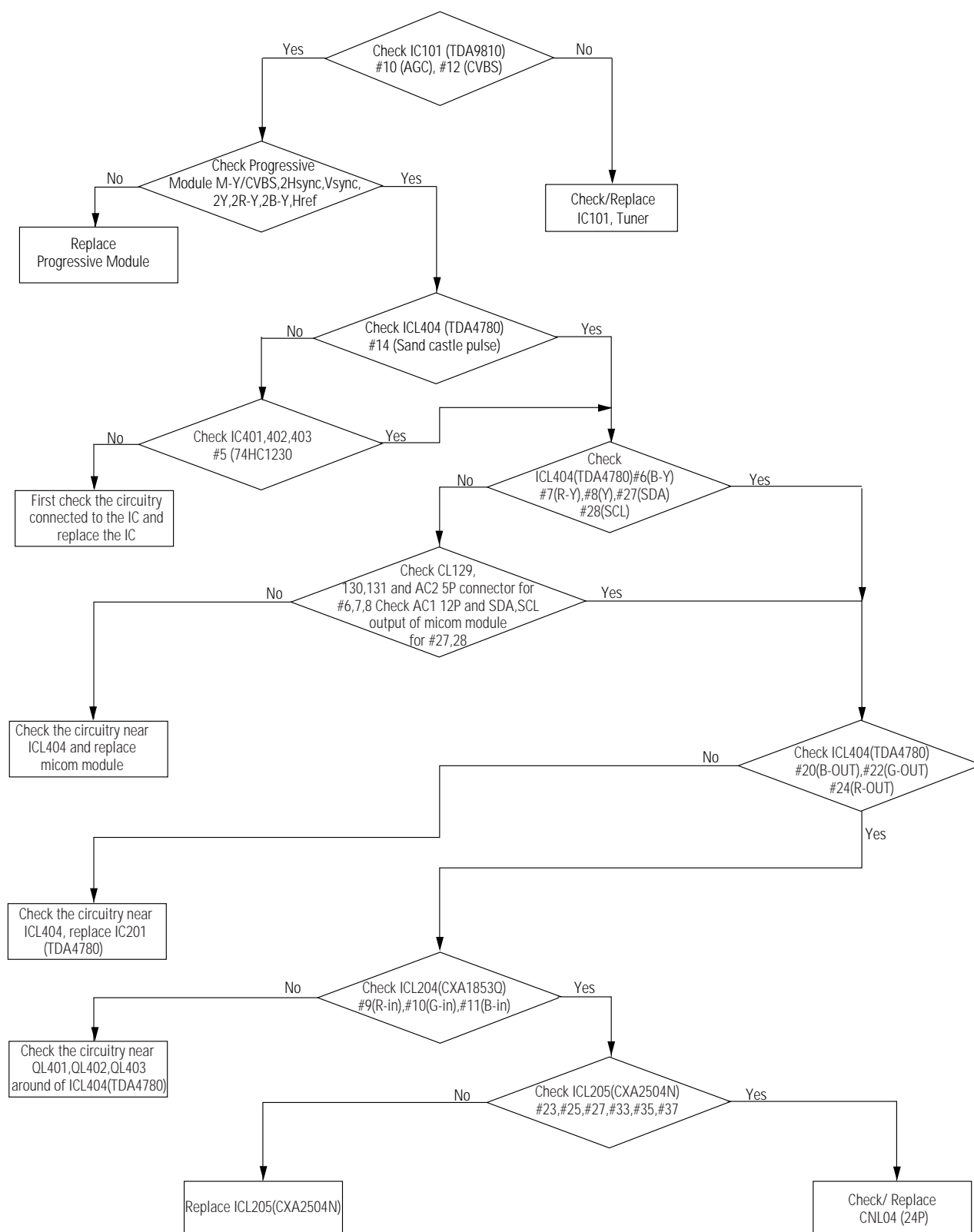
6-1 Service Mode

1. To enter the Service Mode, press the remote-control keys in the following sequence:
Display → Picture Standard → Mute → Power
2. Use the Channel UP/DOWN keys to move within the Service Mode.
3. Use the Vol (+) key and Vol (-) key to change data.
 - (1) Press the Vol (+) key to increase data.
 - (2) Press the Vol (-) key to decrease data.
4. Use the Power key to exit and store data in memory.

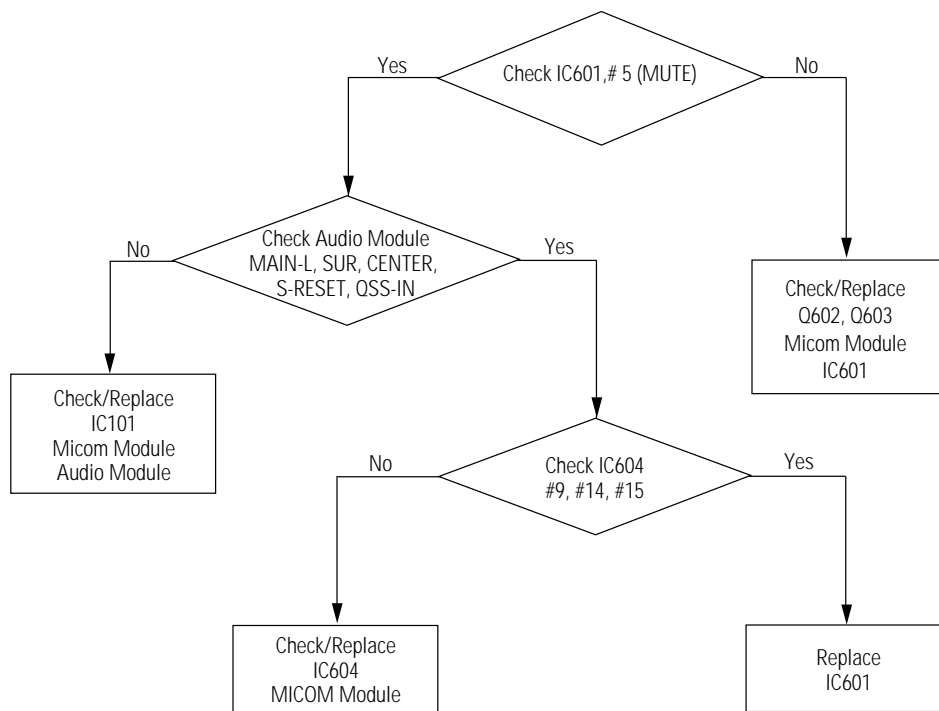
6-2 No Power



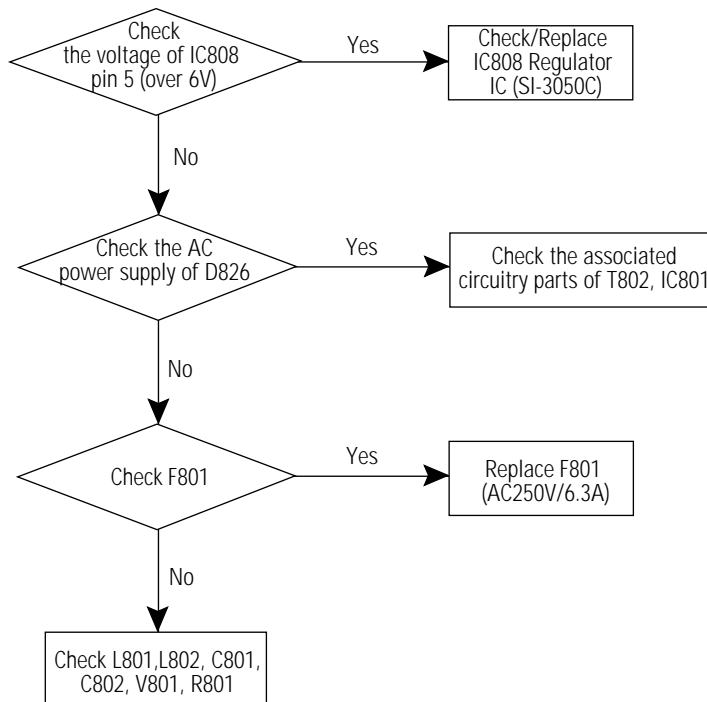
6-3 No Picture



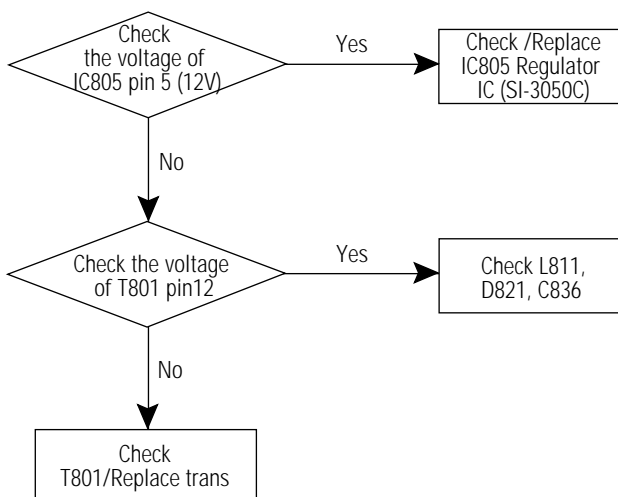
6-4 No Sound



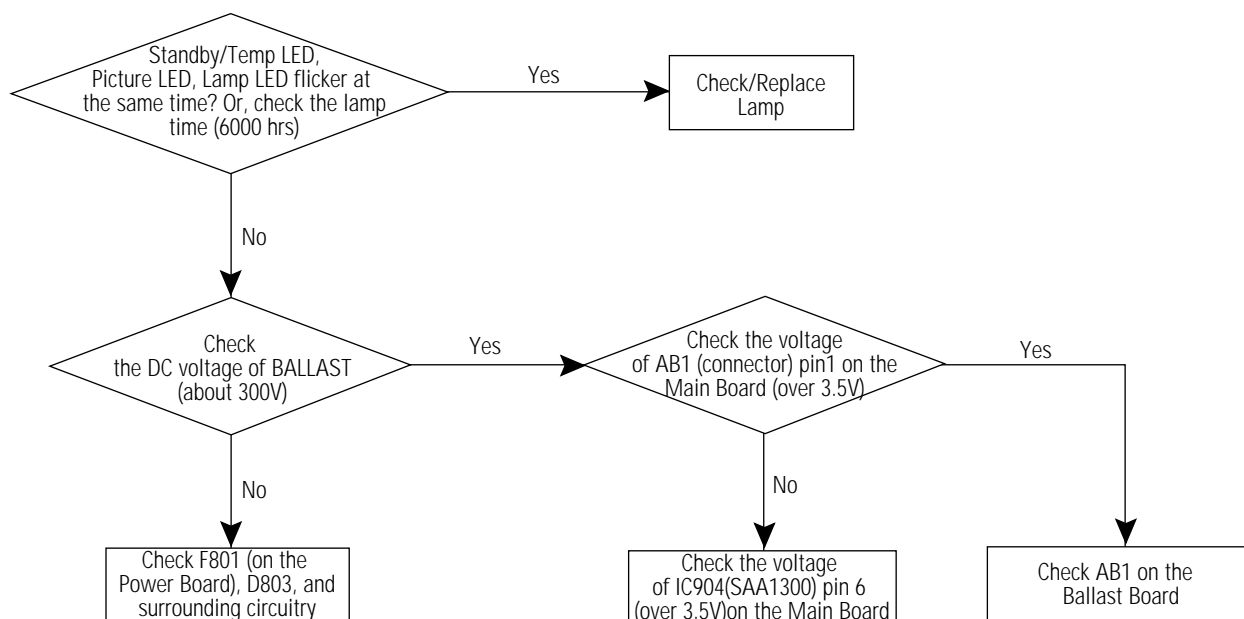
6-5 No Standby (+5V)



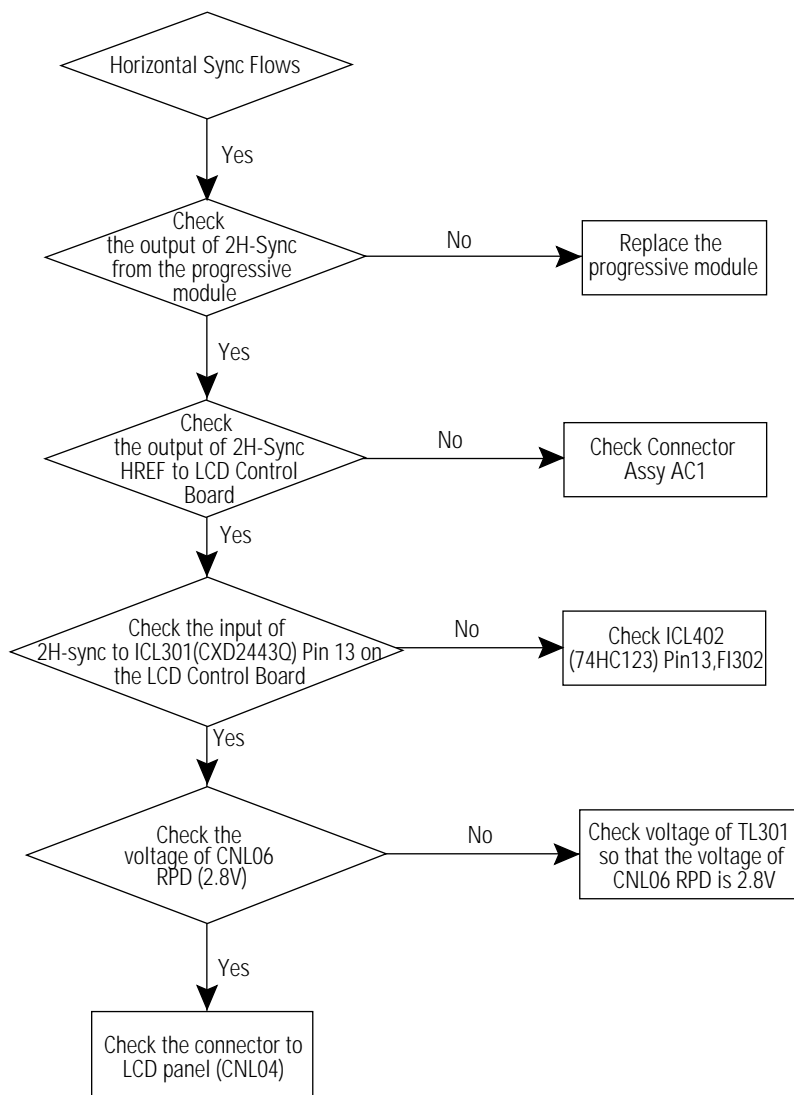
6-6 No FAN Voltage (+8V)



6-7 Lamp Does Not Work



6-8 Horizontal Sync Flows



6-9 Vertical Sync Flows

